

NEW! Flash & Grow

The new ala carte Colony counter

Neu-Tec Group introduces The Flash & Grow – The first colony counter that goes and adapts to your specific micro lab needs. It can be upgraded at any time to fit the level of automation, security and features required.

The Flash & Grow is the latest in a highly successful series of automatic colony counters from IUL Instruments. It combines sophisticated image processing and analysis with an innovative Camera and light source to provide fast, accurate counts of bacterial and mammalian colonies for a wide range of applications.



The "Flash & Grow" modular approach allows laboratories to automate their colony counting processes economically, and upgrade to a higher level of sophistication as the need arises and budget allows. The small footprint "Flash & Grow" utilizes LED illumination for different types of nutrient agars and other growth media. It ensures excellent contrast between colonies and substrate. A high resolution digital camera relays a live image of the sample to the computer screen.



The "Flash & Grow" is ideal for laboratories engaged in drug development & production, food & milk testing, environmental monitoring and public health, with various budget possibilities. The "Flash & Grow" lets the laboratory supervisor create different configurations optimized for each application. Examples include TVC, Coli forms, Ames etc.

Features and benefits

- The only flexible colony counter that can go with your lab needs
- Single push button triggers instant count
- Counts Pour, Spread and Spiral plates, Filters & 3M Petrifilm
- Advanced colony separation & classification technique options
- Data transfer to MS Excel, MS Access and Oracle
- LED lighting ensures optimum contrast between colonies and substrate
- Designed to comply with GLP & FDA 21 CFR Part 11

● **Basic model**
Automatic counting of Pour, Spread and Spiral plates; Filters & 3M Petrifilm with one single button in 1 sec.

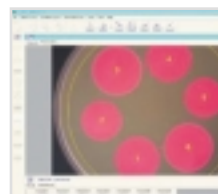
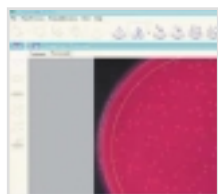
● **Advance**
Customization of Colony Discrimination to cope with particles and to guarantee accurate counts based on size sensitivity, shape and color

● **User permission**
Administration of different user security and permission levels

● **Advance process**
automatic recognition of a plate and application of the correct reading protocol by barcode

● **Zone sizing**
for inhibition zone determination

● **Robotics capabilities**
when connected to a Plate handler



Colony Counter (Model)	Cat. No (110v/ 60hz)	Weight lbs (kg)	Dimensions (W x H x D) Inch (mm)	Time	Platform (Hardware)	Power (W)
Flash - Basic	6010	11.5 (5.2)	7"x14"x9.25" (17x26x23)	1 sec per plate	Flash and Grow	up to 70
Flash - Advance	6011	-	-	1 sec per plate	Flash and Grow	-
Flash - Zone Sizing	6012	-	-	1 sec per plate	Flash and Grow	-
Flash - User Permission	6013	-	-	1 sec per plate	Flash and Grow	-
Flash - Advance process	6014	-	-	1 sec per plate	Flash and Grow	-
Flash - Robotic Capability	4300	108 (49)	33" x13.8" x33.5" (840x350x850)	Complete carousel 20 min	Flash and Grow with the Plate Handler	500

Pumps Systems (Model)	Cat No.	Weight lbs (kg)	Dimensions (W x H x D) Inch (mm)	Pump Delivery Rate (ml/min)	Filling Rate	Power (W)
Dosi Pump DP 1000	700000	15.65 (7.1)	12" x8" x10.82" (305x275x300)	1000	N/A	-
Petri Swiss PS 20	800000	44 (20)	19.8" x24.21" x12" (505x615x305)	800	20/2 min	40
Petri Swiss PS 900	900000	155 (70)	63" x30" x21.85" (1600x760x555)	600	1100/hour	80
Petri Swiss PS 900 P (with .printer)	910000	155 (70)	63" x30" x21.85" (1600x760x555)	600	900/hour	80
Proficalve PC 10	600003	110 (50)	21" x19.5" x22.25" (535x500x565)	N/A	-	3500



QUALITY. PRODUCTIVITY. VALUE



20 Phipps Lane, Plainview NY 11803 USA. Tel: +1-(516)-870-0877, Toll Free (800)-280-0726
Fax: +1-(516)-870-0422, info@neutecgroup.com. www.neutecgroup.com