



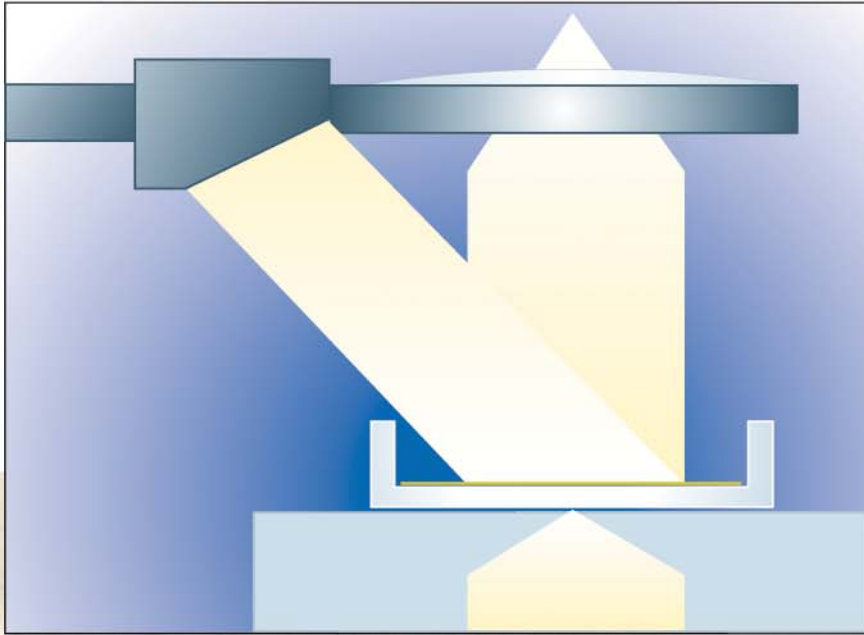
**HALOES**

**COUNTER**



**NEUTEC**  
GROUP INC

# MANUAL COUNTER

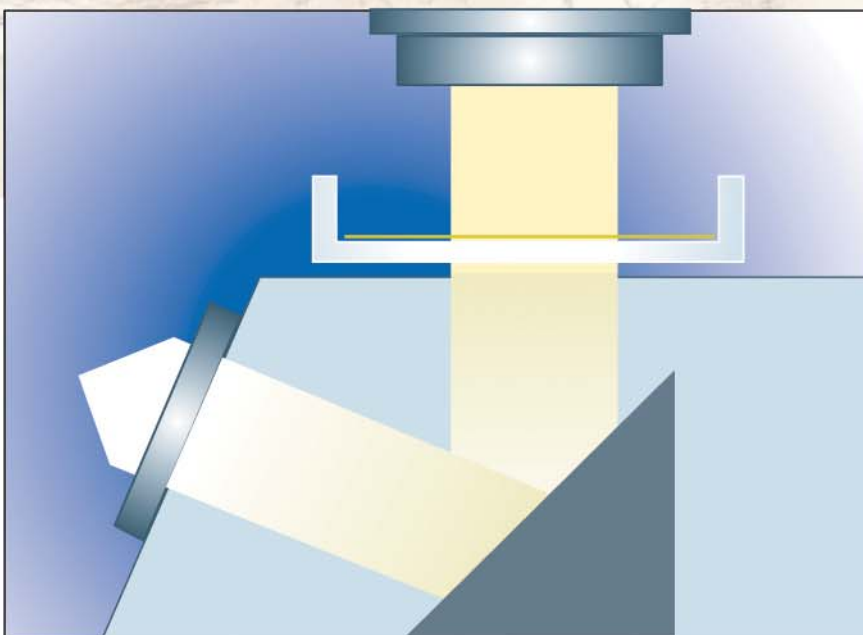


## Perfect illumination system

The smooth illumination of the counting plate is generated by two different sources a backlight and a zenithal light, assuring the perfect illumination of any kind of colonies and media.

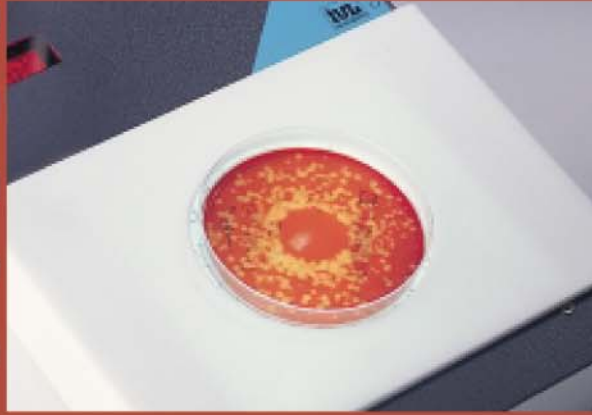
## Non-contact measurement

The perfect way for measurement without contact. The diameter of inhibition zones in transparent media in Petri dishes is measured using a uniform light. Free of parallax error.



# HALOES CALIPER

Put the Petri dish on the centering device



Use the pen to mark the counter colonies



Positioning one side of the object on the calibration line and pushing the reset button



Move the wheel to the opposite side of the object. The display shows the result.



## Features and operation

## TECHNICAL DATA

Model: HALOES CALIPER  
 Magnification: Factor 2.25  
 Measuring range: 0-35 mm  
 Resolution: 0.1 mm  
 Mains: 100/240 V, 50/60 Hz  
 Power: 50 W  
 Dimensions(WxDxH): 27x23x27 cm  
 Weight: 3 Kg

Model: MANUAL COLONY COUNTER  
 Counter: 4 digits, 9 mm LED-Display for up to 9999 counts  
 Connections: Fibre marker with switch or Fibre marker and metal pointer  
 Magnifying glasses: Biconvex, 100 or 120 mm diam. 4 Diopters, Magnification DINx2  
 Mains: 100/240 V, 50/60 Hz  
 Power: 50 W  
 Dimensions (WxDxH): 20x30x40 cm  
 7,9x11,8x15,7 in  
 Weight: 3 Kg/6,6 lb

Specifications subject to change without prior notice

## ORDERING INFORMATION

## Cat-No.

**HALOES-CALIPER**  
 HALOES-CALIPER touchless Colony measurement, complete 0900

**COLONY COUNTER**  
 Colony counter with Fibre marker standard accessories and, magnifying glass No 0672 0602  
 Colony counter with Fibre marker standard accessories and, magnifying glass No 0671 0604  
 Colony counter with Fibre marker/metal pointer, standard accessories and magnifying glass No 0671 0601  
 Colony counter with Fibre marker/metal pointer, standard marker/metal pointer, standard accessories and illuminated magnifying glass with cogwheel adjustment No 0670 0605

Specify mains required (the Cat.No. may change)

**MAGNIFYING GLASSES**  
 Illuminated magnifying glass, 120 mm diameter, stand, high with cogwheel adjustable 0670  
 Illuminated magnifying glass, 120 mm diameter, stand, high adjustable 0671  
 Magnifying glass, 100 mm diameter, stand, high adjustable 0672



### Contact us in internet.

To see how the instruments works in a multimedia demonstration, to buy instruments, accessories or consumables on-line visit our web page:



A Joint Venture with Velp Scientifica and IUL Instruments

20 Phipps Lane, Plainview NY 11803 USA  
 Tel: +1-(516)-870-0877, Toll Free (800)-280-0726, Fax: +1-(516)-870-0422, info@neutecgroup.com  
[www.neutecgroup.com](http://www.neutecgroup.com)