

# Microbiology: Prepared Plates

## Modified m-TEC Prepared Plates for E. Coli EPA Method 1603.

M-TEC stands for “membrane thermotolerant E. Coli,” so named because it is a membrane filtration method and the E. Coli bacteria are cultured in a very warm (35.0°, then 44.5°C.) environment. This particular media works extremely well because it is both selective (encourages the growth of E. Coli specifically) and differential (discourages the growth of other competing bacteria).

This new, one-step process for the enumeration of E. Coli is EPA approved for NPDES reporting and complies with the March, 2007 EPA rule change for E. Coli reporting. Each sleeve of plates comes with a Control Sheet with lot number and expiration date. For use with 47mm gridded MCE filters, see page 46. Use plates within 60 days from date plated. Store at 2-5°C and keep sealed in plastic during storage.

### What Makes This Process Special?

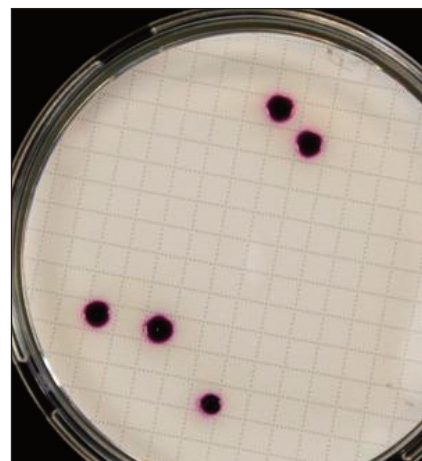
Thanks to the patented chromogen in modified m-TEC, all E. Coli colonies appear as red / magenta colonies that are very easy to see, count, and record. Modified m-TEC is the culture media of choice for enumerating E. Coli (Escherichia Coliform) bacteria in wastewater and ambient waters.

### Plates Are Economical and Easy-to-use.

Finally, a single step method with no need for expensive sealers or bulky trays. Your plates come prepared and sealed in a plastic tube with expiration date clearly stamped on each plate. There is no need to buy plates with pads with modified m-TEC. All you do is filter the sample, place the filter on the m-Tec plate, incubate, and after 24 hours, read the results. No lights, substrates, or messy vials. Just incubate and count the bright red-magenta colonies.

### Prepared Media Plates are also available for Fecal Coliform and Enterococci in Water.

All prepared media plates come ready to use and include prepared media in a sterile petri dish. Every order ships with date stamp tag on each sleeve and includes a Quality Control Document.



*With Modified m-Tec, magenta E. Coli colonies are very easy to see and count.*

<i>Description</i>	<i>Quantity</i>	<i>Catalog #</i>
Modified m-Tec for E. Coli EPA Method 1603	6 plates per sleeve	MMTec6
	10 plates per sleeve	MMTec10
	12 plates per sleeve	MMTec12
m-FC Fecal Coliform Prepared Plates	6 plates per sleeve	MFC6
	10 plates per sleeve	MFC10
	12 plates per sleeve	MFC12
m-EI Enterococci in Water for EPA Method 1600	10 plates per sleeve	MEI10
	12 plates per sleeve	MEI12

# ENVIRONMENTAL EXPRESS

Call 800.745.8218 or 843.576.1147 • [www.environmentalexpress.com](http://www.environmentalexpress.com)



# Microbiology Products: Standards and TSB

## Quantitative Microbiology Standards are now available.

Pure cultures of various microorganisms work with all approved methods including Enterolert®, SM9222B, SM9222D, EPA1603 and EPA 1600. Just hydrate each sample in 100mL of supplied sterile hydrate fluid and analyze. Cultures are stable for at least one year after receipt.

All Standards are supplied with a product Certificate of Analysis insert detailing storage and preparation requirements and procedures, sample certified concentrations in units of CFU/100mL and acceptance limits based upon interlaboratory PT studies.

Description	Quantity	Catalog #
Enterococcus faecalis, Low range	5 pellets in individual vials	NSI775L5
Enterococcus faecalis, Low range	20 pellets in individual vials	NSI775L20
Enterococcus faecalis, Mid range	5 pellets in individual vials	NSI775M5
Enterococcus faecalis, Mid range	20 pellets in individual vials	NSI775M20
Enterococcus faecalis, High range	5 pellets in individual vials	NSI775H5
Enterococcus faecalis, High range	20 pellets in individual vials	NSI775H20

Range: Low, 30-100 CFU/100mL; Mid, 100-200 CFU/100mL; High, 1000-1500 CFU/100mL

E. coli	5 pellets in individual vials	NSI90015
E. coli	20 pellets in individual vials	NSI900120
P. aeruginosa	5 pellets in individual vials	NSI106625
P. aeruginosa	20 pellets in individual vials	NSI1066220
E.aerogenes	5 pellets in individual vials	NSI100065
E.aerogenes	20 pellets in individual vials	NSI1000620
Klebsiella pneumonia	5 pellets in individual vials	NSI81675
Klebsiella pneumonia	20 pellets in individual vials	NSI816720

Range: Samples formulated at 1000-2000 CFU per pellet

HPC Control Standard	5 pellets in individual vials	NSIHPCQC5
HPC Control Standard	20 pellets in individual vials	NSIHPCQC20

## Tryptic Soy Broth (TSB) is a general purpose medium used for the culture of various microorganisms.

The medium comes already prepared and is available in 100mL bottles or 25mL tubes. The TSB is also available in regular and double-strength depending on the needs of the laboratory. The prepared medium is brilliant to clear, yellow to amber, with none to light precipitate.

Description	Volume	Catalog #
Tryptic Soy Broth	100mL	MT-0778-100
Double Strength Tryptic Soy Broth	100mL	MT-0078-100-2X
Tryptic Soy Broth in 25mL tubes	10 x 25mL	MT-0778-25



Microbiology Standards are sold in 5 or 20 sample kits. Pellets are packaged in individual vials.



See the General Laboratory section of our catalog for a complete selection of Water Baths, Incubators, Colony Counters and more.



# ENVIRONMENTAL EXPRESS

Call 800.745.8218 or 843.576.1147 • [www.environmentalexpress.com](http://www.environmentalexpress.com)